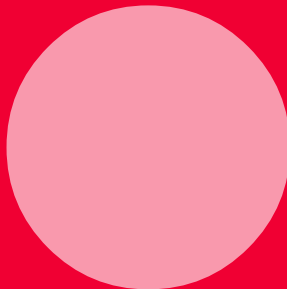
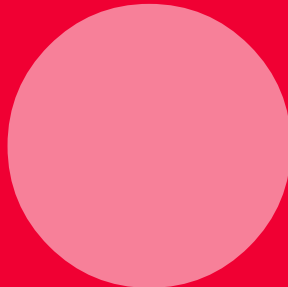
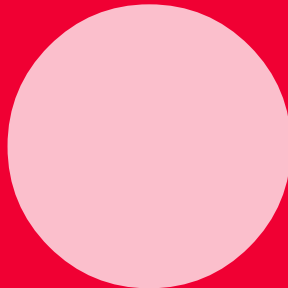
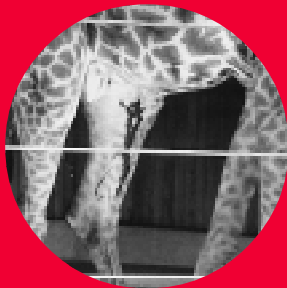
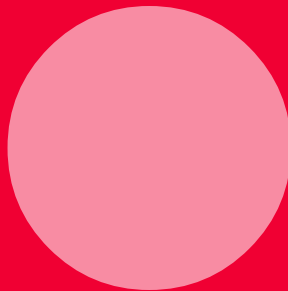


# AS220

Nov / Dec 2000

115 Empire Street  
Providence RI 02903  
401 831 9327  
[www.as220.org](http://www.as220.org)



# AS220welcome

115 Empire Street / Providence RI 02903  
401 831 9327 / fax 401 454 7445  
www.as220.org / as220@as220.org

---

## What is AS220?

AS220 is a nonprofit with a simple mission: to provide an open and permanent venue for artists of all types and calibres. Our galleries and our stage are completely unjuried; any Rhode Island artist can exhibit or perform here.

AS220 also works to make basic resources available to artists. Our darkroom, computer lab, and printshop are open to the public, and we rent residential and work studios at extremely affordable rates.

With so much activity in the building, AS220 also serves informally as a networking and community-building center. Our doors are always open to people seeking opportunities, resources and like-minded artists.

Since August 1985, AS220 has grown from a one-room operation with essentially no budget to an organization that has renovated a 22,000 square foot building in downtown Providence. Since 1993, AS220 has provided a secure home for two other nonprofit arts organizations—Perishable Theatre and Groundwerx Movement Center. AS220 has received national attention from arts administrators, public officials and artists due to its unique success as an invaluable resource for both Rhode Island's artists and public.

---

*AS220 is funded in part by the Rhode Island State Council on the Arts, Lila Wallace-Reader's Digest Fund, the Corporation for National Service, and AS220 Members.*

*Funding for the Muse Union's Muzine and the Poetry Workshop provided by the Concordia Foundation.*

---

## this newsletter

- This newsletter was written by
- **Geoff Griffin, Lizzie Araujo, Liz Buddington, Micah Berkley, Lauren Brooke** and all of the exhibiting visual artists. It was
- designed by **Winsor Pop**.
- And it contains a two-sided
- 8.5"x14" pullout centerfold
- calendar. AS220 paid good
- money for this calendar, and
- we ask that you please affix it
- to your refrigerator, and don't
- forget to flip it December 1st.

**www.as220.org**  
**for even more information**

---

## AS220 staff

- **Lizzie Araujo**
- Associate Artistic Director
- lizziea@as220.org
- 
- **Lauren Brooke**
- VISTA Coordinator
- lauren@as220.org
- 
- **Liz Buddington**
- Fundraising Manager
- liz@as220.org
- 
- **Kareem Caines**
- Muse Union VISTA
- kareemcaines@as220.org
- 
- **Sam Chanse**
- Broad Street Studio Assistant
- sam@as220.org
- 
- **Jill Colinan**
- Cafe Manager
- jill@as220.org
- 
- **Umberto Crenca**
- Artistic Director
- bert@as220.org
- 
- **Ellen Darling**
- Volunteer Coordinator
- volunteer@as220.org
- 
- **Geoff Griffin**
- Communications Director
- geoff@as220.org
- 
- **Lydia Grinnell**
- Muse Union VISTA
- lydia@as220.org
- 
- **Joelle Jensen**
- Youth Services Director
- joelle@as220.org
- 
- **Kim Kazan**
- Gallery Director
- kazan@as220.org
- 
- **Scott Lapham**
- Darkroom Manager
- scott@as220.org
- 
- **Ryan Rooney**
- Muse Union VISTA
- ryan@as220.org
- 
- **Josh Tiffany**
- VISTA Leader
- josh@as220.org
- 
- **Shawn Wallace**
- Managing Director
- shawn@as220.org
- 
- **Amy Zimmitti**
- House Manager

---

## AS220 Mission Statement

*We, the Citizens of Rhode Island and Providence Plantations, associate ourselves for the purpose of providing a local forum and home for the arts, through the maintenance of residential and work studios, galleries, and performance space. Exhibitions and performances in the forum will be unjuried and open to the general public. Our facilities and services are made available to all artists who need a place to exhibit, perform, or create their original artwork, especially those who cannot obtain space to exhibit or perform from traditional sources because of financial or other limitations.*

---

## In This Issue

What is AS220? .....	2
Use AS220 .....	4
Complex News .....	6
Muse Union News .....	8
AS220 Galleries .....	10
Third Floor .....	12
AS220 Events .....	13
AS220 Cafe .....	22
Join AS220 .....	23

---

## Thanks to

to **WBRU** for donating CDs which served as prizes at the Muse Union's Performance Showcase

to the **Providence Biltmore** for arranging for last-minute accommodations for the Reverend Billy in October

to **Bruce Allen** and the team at the **Providence Phoenix** for all of their help in promoting AS220

to **Jonathan Bell**, who has designed furnishings for the Broad Street Community Studio

to **Mike Chandley** of **Cellar Stories**, who donated a large collection of art books that will serve as a backbone for the Community Studio's library

to **Miss Fannie's Kitchen** and **Domino's Pizza** for sponsoring the Community Studio's neighborhood cleanup in September

to **Michael Araujo** for constructing the platform that made Ellen's Back Stairs project possible

to **Andy Correa** for donating a set of dishes to the third floor kitchen

to **AS220 audiences** for filling our rooms and helping us fulfill our mission



photo: Stephanie Richardson, Focus 2000

---

**This newsletter appears six times annually, and is distributed through the mail and at various locations throughout the state. If you would like to be added to our mailing list, or if you're on it and want to be removed please contact Geoff at 401-831-9327 or [geoff@as220.org](mailto:geoff@as220.org).**

---

# use AS220

AS220 exists to provide opportunities for artists and audiences alike. We strive to aid in all steps of the creative process, from inspiration to presentation, and so we keep our range of services as wide as possible. No artist is ever charged a fee to present their work at AS220; in fact, we work to compensate every artist while still ensuring that their work can be seen by the widest possible audience.

By keeping prices low and programs open to all, we ensure that the open spirit of our mission continues to flourish.

---

## Performers

### To book our stage

AS220's stage is open to any Rhode Island artist who has material to present. Get a sample of your work to **Lizzie Araujo** at AS220's office. Give her four weeks to review your work, then get in touch with her by calling 831-9327 on Tuesdays or Wednesdays between 2pm and 6pm. Artists are usually paid through a split of the door admission.

If you have a short performance (five minutes or less), you can get it in front of a large, supportive audience at the Pork Chop Lounge. The Pork Chop Lounge happens every Sunday at 8pm; to book your slot at the Pork Chop Lounge, call Lizzie at 831-9327.

Spoken word artists are also invited to participate in the open mikes at the monthly Poetry Slam and HH220 nights. Musicians are encouraged to join in at the New England Old Time Slow Jam and Jonathan Stark's Drum-In. See the calendar for dates and times.

---

## Visual Artists

### To book our galleries

Any Rhode Island artist is welcome to exhibit in one of AS220's five galleries. AS220 charges a 30% commission for works sold. To book your show, contact **Kim Kazan** at 831-9327 or [kazan@as220.org](mailto:kazan@as220.org).

### To use the Community Darkroom

The Community Darkroom offers professional-quality black and white facilities at extremely affordable rates. First-time users must attend two sessions under a monitor's supervision before they can schedule time alone in the room. Contact **Scott Lapham** at 274-1299 to book your first session.

### To use the Community Printshop

The Community Printshop can accommodate water-based screenprinting projects. To get access to the Printshop, come down to one of the open training sessions held by **Pete Cardoso** every Tuesday at 6:30pm.

### To draw from life

Figure Drawing sessions offer a weekly opportunity to draw and study the human form. Come by the Cafe Monday evenings at 7pm; bring your own materials and \$5 to help pay the model.

---

## Writers

### To critique and be critiqued

The Turtle's Writers Circle meets on the second and fourth Thursday of every month at 7pm to discuss each other's work. Newcomers are always welcome.

# use AS220

---

## Film/Videomakers

### To show your work

TV220 brings the work of Rhode Island artists to public access cable every week. Any original work submitted by Rhode Island artists will be used. Drop off submissions at the AS220 office. Contact **Amy Zimmitti** at [zinsular@as220.org](mailto:zinsular@as220.org) or see page 6 for more information.

You can also book a screening on our stage; see *Performers*, above, for more information.

---

## 21 and Under

### To get out of the house

All shows are all ages, except the Pork Chop Lounge, which has a loosely applied R rating.

The Muse Union provides a wide variety of opportunities for youth to create, exhibit, perform and enjoy new work. See page 8 for more information.

The Muse Union Gallery hosts open exhibits of youth work; contact **Lydia Grinnell** at 454-3951 or [lydia@as220.org](mailto:lydia@as220.org) for more information.

The Muse Union Performance Showcase is a monthly open stage for performers who are 21 and under. To participate, sign up at the Showcase or contact **Ryan Rooney** at 454-3951 or [ryan@as220.org](mailto:ryan@as220.org).

The Muzine is a 24-page publication showcasing written and visual work from young artists. Submit your work at the Muse Union office on AS220's second floor.

---

## Everybody

### To use a computer

Internet access is available in our Cafe during the Cafe's operating hours. The Muse Union Computer Lab is also open on the second floor from noon to 5pm, every week, Tuesdays to Fridays.

### To eat and meet

The AS220 Cafe is open seven days a week, serving hot food, cold drinks, sandwiches and fresh baked goods. The Cafe opens 10am on weekdays and 7pm on Sundays. Catering is also available. See page 22 for the menu and the recipe of the month.

### To get a roof over your head

AS220's studio program offers low-cost housing to working artists in a cooperative living environment. For more information contact **Shawn Wallace** at 831-9327 or [shawn@as220.org](mailto:shawn@as220.org)

### To volunteer

AS220's volunteer program offers opportunities to contribute to AS220's growth, plug into new communities and enjoy discounted admission. Five hours of volunteer service gets you free admission for a month. To find out what you can do for AS220, contact **Ellen Darling** at 831-9327 or [volunteer@as220.org](mailto:volunteer@as220.org).

---

**Five hours of volunteer service gets you  
free admission to AS220 for a month!**

---

# complexnews

---

## New VISTAS



Fresh out of college, **Liz Buddington** (pictured) is a new VISTA Member whose service will be development for AS220's programs and projects for the next year. She's excited about finding support in our community for future growth and changes in AS220. She hails from beautiful downtown Wickford, Rhode Island. Liz designs jewelry and clothing, and has also worked on new systems for gardening in the urban environment, so, if you never thought you had a green thumb, Liz may have the solution.

**Ellen Darling** came to Providence from Maine to go to school, and came to AS220 in August hoping to land a job in the Cafe. To her surprise, she ended up as a VISTA Member instead, charged with developing AS220's volunteer program. The volunteer program is vital to AS220's operations, and Ellen will be working to get AS220 volunteerism a higher profile amongst do-gooders and art fans throughout the state.

Like Ellen, **Sam Chanse** ended up with a job that wasn't the one she came to apply for. Sam attended the recruitment meeting that the Broad Street Community Studio team held for prospective teachers, but her interest was piqued by the mention of a VISTA position in the Community Studio's administration. In October, Sam joined the team; she'll be working closely with **Joelle Jensen** on the day-to-day operation of the Community Studio for the next year.

---

## TV220 Moves

Careful readers of this newsletter may have noticed that AS220's staff has been growing steadily in the past year. In September, Managing Director **Shawn Wallace** led a reorganization of the office to accommodate the eleven (!) people who would be working out of that room.

The first casualty of the renovation was the Video Balcony, the odd perch that housed the video editing suite where TV220 is created. TV220 moved to much more respectable spot down the hall, filling the studio vacancy created by **Amy Cohen's** departure.

The new location gives TV220 an air of professionalism that it well deserves. Under the watch of **Amy Zimmitti** (right) and **Heather Sylvester**, TV220 has experienced a quantum leap in both quality (how

: about that subtle  
: promo in the  
: lower left-hand  
: corner?) and  
: quantity (new  
: shows now  
: appear twice a  
: month!). Ever  
: true to AS220's  
: open mission,  
: TV220's staff can  
: boast that every-  
: body who submitted work has been  
: included on the show.



: To get your work aired on TV220, just  
: bring your VHS or SVHS tape by  
: AS220's office. It's that easy!

: Amy and Heather are also always  
: looking for feedback from people who  
: have seen the show. You can make  
: their day by emailing your thoughts  
: to [zinsular@as220.org](mailto:zinsular@as220.org)

---

## AS220 and VISTA

This Fall, the partnership between AS220 and the Corporation for National Service deepened with an award that brings \$260,000 of new federal funding into Rhode Island.

AS220 will use the award to hire, train and oversee Americorps\*VISTA Members working in at least twelve Rhode Island agencies. These agencies serve many different populations in different ways, but they all have one thing in common: they all use the arts as a tool in working with youth.

Mount Hope Learning Center, Arts In The Square in Olneyville, The West Warwick Police Dept., Youth In Action, Trinity Encore Inc., and Capitol Region RSVP are all currently included in this initiative. AS220's grant project director is currently reviewing applications from at least five other agencies to be brought on board.

This award represents the latest step in a growing partnership between AS220 and the Corporation for National Service. In 1997, AS220 began hosting VISTA Members through the Corporation for National

Service. The Corporation for National Service is an independent federal agency that engages Americans of all ages and backgrounds in community-based service through three national service initiatives – AmeriCorps, the National Senior Service Corps and Learn and Serve America.

AmeriCorps\*VISTA (Volunteers in Service to America) has a 35-year track record of building organizational and community capacity and mobilizing local resources to ensure project sustainability. Since 1997, VISTA Members have helped build a number of programs at AS220, but most of the work they've done has fed into AS220's growing roster of youth programs.

There are currently six VISTA Members at AS220 developing the Muse Union, AS220's youth outreach program. A key part of the Muse Union work is the Broad Street Community Studio, AS220's transitional arts program for youth from the Rhode Island Training School.

---

## Back Stairs

Volunteer Coordinator **Ellen Darling** tackled a long-standing AS220 remodeling problem this September – the funky backstage stairwell that serves as the main entry to AS220's basement. Ellen talked AS220 residents and staff into donating collections of vintage AS220 documents, posters and paper ephemera, and she and volunteer **Andy Meacham** used what she reaped to create a kaleidoscopic collage that covers the stairway walls. Thanks go out to **Michael Araujo**, who constructed the platform that allowed Ellen and Andy to get to those hard-to-reach spots. Stop in and take a peek one of these days, and remember – Ellen is still looking for a volunteer to seal the collage with lacquer! Ellen can be contacted at 831-9327 or [volunteer@as220.org](mailto:volunteer@as220.org).



Ellen Darling

# museunion

---

## The Muse Union Want You

The Muse Union is AS220's effort to create creative opportunities for Rhode Island's youth. Through a growing slate of programs, high-school-age youth are enjoying chances to check out each other's work on gallery walls, up on stages and in the pages of the 24-page Muzine. The Muse Union also provides instruction through programs like Focus and the new Broad Street Community Studio (see page 13).

All of these programs are fueled by the hard work of AS220 staff, VISTA Members, and, most importantly, the youth themselves. If you're interested in getting involved, as a volunteer, performer or audience member, here are some of the opportunities you'll get this fall:

**Lydia Grinnell** has issued an open call for visual artwork to be included in a show that will hang at AS220 in December and January. The theme of the show is Visual Poetry, and all original work from artists aged 21 and under will be included. Get your work down to AS220 by December 11th to get in the show!



Lauren Brook, Lydia Grinnell and Micah Berkley in the Muse Union office

The Performance Showcase opens the AS220 stage to all youth performers once a month. Past Showcases have included music, spoken word, dance and more. To get on the stage at the next Showcase, contact **Ryan Rooney** at the Muse Union office.

The Muse Union's weekly meetings are open to youth and adults who are interested in getting involved behind the scenes. Call 454-3951 to find out when the next meeting is.

The Muzine is a 24-page magazine devoted to Muse Union visual arts and writing. The third edition of the Muzine, edited by Met Center student **Jesse Suchmann**, will be coming out in December 2000. Look for your copy at AS220, up on Thayer Street, in the public libraries or in other spots where teenagers congregate nowadays.

Work created in the Focus 2000 program will be on view in the Muse Union Gallery at AS220 through November 11. Focus is an intensive photography class that has been run for the past two summers out of AS220's Community Darkroom.

## Muse Union Hotline 454-3951

---

## Broad Street Community Studio

In October, the Broad Street Community Studio hosted its first class, marking the beginning of one of the most ambitious – and promising – projects AS220 has taken on since the Build AS220 campaign. When it is completely up and running in January, the Community Studio, located at 790 Broad Street, will be an intensive arts-immersion program serving youth being released from the Rhode Island Training School. AS220, in partnership with the Corporation for National Service, will be providing instruction for youth six days a week, while Tides Family Services will handle the social services needs of these students.

In September and October, the staffing for this program came together. **Joelle Jensen** completed her year of service with the Americorps\*VISTA program and joined the AS220 staff full-time as Youth Services Director, and **Sam Chanse** has arrived to work closely with Joelle on the Community Studio project (see page 6). The first six Community Studio instructors have been chosen; these folks will be teaching a variety of media to youth before and after their release from the Training School.

**the Community Studio  
will be an intensive  
arts-immersion  
program serving youth  
being released from  
the Rhode Island  
Training School**



Sam Chanse

The full program will not begin until January, but the Studio is already getting use! **Kareem Caines** and **Demian Yattaw** both began teaching weekly classes for youth from Tides Family Services, and **Lydia Grinnell** has organized a Muse Union visual arts show to hang in the Studio in November. Instructors are already at the Training School, teaching introductory workshops to the students who will make up the first Community Studio class upon their release in January.

Special thanks go to **Jonathan Bell** and to Home Depot, for their contributions to the design of the Community Studio's workspaces. These work can be seen, along with the Muse Union's visual work, when the Community Studio is open to the public, Saturdays throughout November from 11am–2pm.

# AS220 galleries

October 19 – November 11

## Cafe Gallery

Riva Leviten – prints, drawings, collage

## Upstairs Gallery

Susan Clausen – mixed media

Kitty Lovell – paintings

## Open Window

William Schaff – *Skeleton People* – collage

## Brick Wall

Lydia Grinnell – self portraits

## Muse Union Gallery

Focus 2000 – photography



### Susan Clausen – mixed media

In Clausen's current work she attempts to integrate form and function using cabinets as the basic format. Many of these current works integrate found objects and various architectural archetypes such as shinto shrines, steeple clocks and Mexican reliquaries. It is Clausen's hope that these works transcend their function and resonate as works of art.



### Riva Leviten – prints, drawings, collage

To exist beyond existential / Essential Root words / Signed in ink / Under Oath / To be waxed / Forever Real / Without Guile / A truth carved into wax / The dream ... may it persist / Half Truths / Aborted Veracities / Dark and Light / Silent Partners / Manufactured / Embellished / Til half lies / Can not do it all.



### Kitty Lovell – paintings

Lovell is a scenic artist working throughout New England. Her work has been in theatres, movies and museums. She is a founding member of El Studio La Mano, a collaborative group devoted to the idea "We can make anything".



### William Schaff – *Skeleton People* – collage

Is it funny, or is it actually kind of sad? Schaff looks at death among us in these whimsical and interesting collages, where at least one person always seems to be showing us their bones! So come look at the art, and then look at the person standing next to you. You may just be looking at a reflection in the mirror.

### Focus 2000 – photography

This show collects the photography of the students who participated in AS220's Focus 2000 program: Sasha Wiseman, Sudha Bhut, Stephanie Richardson, Roxanne Young, Justeen Houle, Brooke Purinton, Crystal Regan and Jesse Suchmann.

## Gallery Hours

AS220's galleries are open Monday through Friday, noon to 5pm and Saturday 1pm to 5pm.

Work in the Cafe Gallery and the Open Window can be viewed during the Cafe's normal hours of operation.

---

# November 11 – December 16

**Cafe Gallery**  
**Upstairs Gallery**  
**Open Window**  
**Brick Wall**  
**Muse Union Gallery**

**Helter Skelter – New Art from the UK**  
Contemporary art from **Penelope Hayes,**  
**Anne Noble-Partridge, Cherie-Marie**  
**Veiderveld, Charlotte Newman and**  
**Brendan O'Neill**



sponsored by:

••••• The  
••••• British  
••••• Council

**DAT**  
DIGSWELL ARTS TRUST

**TRAVEL**  
QUEST

---

# December 18 – January 13

**Cafe Gallery**

Earle Thurber – paintings  
David Moroni – paintings

**Upstairs Gallery**

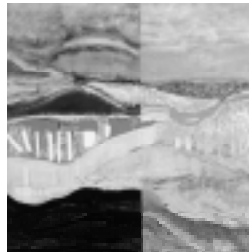
Umberto Crenca – paintings  
Pamela Murray – photographs

**Open Window**

Denise and Diane Tetreault – *Pretty Things*

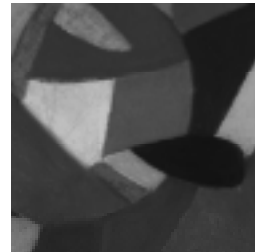
**Muse Union Gallery**

Muse Union – *Visual Poetry*



**Earle Thurber – paintings**

Thurber's paintings grow from a lifelong fascination with art, psychology, and design and are in many ways an integration of all three areas of interest. The work is constructed of layers of color and form, free associations that are subsequently refined through a more conscious design process.



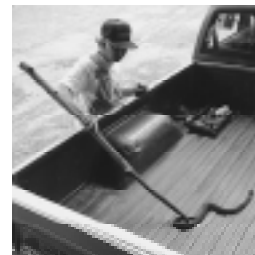
**David Moroni – paintings**

Moroni's purpose when he is creating artwork is to live in the moment of the creative process and not be consumed by the end results of what he is creating. Art, for Moroni, is the creative process and when the process is finished then the art ends and personal interpretation begins. Moroni is searching for his own personal alphabet, a view of the world that is his, one that he has not created but uncovered.



**Umberto Crenca – paintings**

Crenca's intention in this work is to be as literal as possible. The work is simply about objects, symbols, people, animals and their labels as well the sound of the words that we associate with these images. These images are a representation of the fundamental ways in which we communicate.



**Pamela Murray – photographs**

Murray's black and white photographs are the evidence of her quiet study of busy men. A photographer and musician, Murray has a studio at AS220, where she helped establish the Community Darkroom.

**Muse Union – Visual Poetry**

The Muse Union, AS220's program for high school-aged youth, has created a show that explores the intersection of visual art and the written word. This show integrates every piece that was submitted into a powerful whole.

# thirdfloor

November 1st brings some turnover to AS220's third floor. After nine months of both living and working at AS220, **Joelle Jensen** will be moving out. Joelle credits AS220's residential program with easing her transition to Providence; she came to AS220 from Baltimore without knowing a soul in Rhode Island, and living on the third floor plugged her in immediately. The third floor's loss is the East Side's gain, and we'll still be seeing plenty of Joelle as she continues to serve as AS220's Youth Services Director.

**Beth Nixon**, on the other hand, has taken off for Maine, Guatemala, and an urban center to be named later, in that order. We won't be seeing much of Beth anymore, but her huge paper mache installations – the Fools Ball alligators and the Office bathroom sculpture – remain at AS220 to testify to her stay here. When she came to AS220 in February, Beth leapt straight into Providence's growing puppetry scene, traveling the hemisphere with Big Nazo Puppets and touring the East Coast with Blood From A Turnip and a series of solo shows.

This fall, two other third floor residents became the proud parents of new full length albums. **Erin McKeown's** *Distillation* CD won her the affections of a national record label; Signature Records, home of singer-songwriters like Richard Shindell, picked up the record in October, ensuring that fans of Erin's seductive songs

can find them in record stores across the nation. And **Alec K. Redfearn's** *The Eyesores* finished their sophomore effort, *Bent At The Waist*, in Providence's Sound Station Seven. "Less words, more psychedelia" promises Alec, who's still choosing a label for this project.



Eric McKeown

In January, the third floor's Artist-In-Residence program will continue. This program brings mid-career artists into the community for three or four months. AS220 is currently talking to Provincetown artist/activist **Jay Critchley** about coming in January, and the office is in the very early stages of arranging for another Cuban artist to come to AS220 later in 2001.

Wow! A refrigerator-friendly calendar!

# AS220events

## NOVEMBER 1 – 4

### 1 Wednesday

#### 8pm **Pigs In Shit**

*Pigs In Shit – Exploring the Effects of Overabundance*, is a flamboyant, tragi-comic, improvisational and musical performance piece by **Laurel Casey**. Accompanying Ms. Casey will be **Todd Baker** on bass and **Gab Evans** on piano. \$5



Laurel Casey

### 2 Thursday

#### 5pm **AS220 Open House**

Once a month, AS220 throws open all four stories. Come meet staff, tour the building, ask your questions and learn how you can get plugged in to AS220. Free

#### 8pm **Poetry Slam**

Rhode Island's premier performance poetry event with an open mike and **Bob Holman**, founder of the Nuyorican Poets \$5

### 3 Friday

#### 10pm **Humbuck Squash, Stereo Soul Future, Will Briley**

Humbuck Squash and Stereo Soul Future are two great rock bands, and Will Briley (formerly of Jazzmine) plays sweet, soulful acoustic music. \$5



Will Briley

### 4 Saturday

#### 8pm **Prestige**

An original play written by Ethan Vlah and Michael Santile, followed by featured poets, prose, music and an open mike. \$5

Email [events-request@as220.org](mailto:events-request@as220.org) with "Subscribe" as the subject to receive weekly calendar updates.

### Shop for Art!

Thanks to Eastside Marketplace, there's now a way for you to help AS220 for just the cost of a first-class stamp. If and when you shop at Eastside Marketplace, mail your receipts to AS220. They'll send us a check for 1% of the total of all the receipts we can gather. This is an easy and effective way for the more-organized members of our constituency to make a contribution. Eastside Marketplace has locations on Providence's East Side (Pitman Street) and in Newport (Bellevue Avenue).



**Mail your Eastside Marketplace receipts to:  
AS220, 115 Empire Street, Providence RI 02903**

# AS220events

## NOVEMBER 5 – 11

### 5 Sunday

- 8pm Pork Chop Lounge Open Mike**  
The Pork Chop Lounge is trying something new – the first Sunday of every month will be an open mike. Come down and try out what you plan to do at the Variety Show later this month. Free

### 6 Monday

- 7pm Figure Drawing**  
Draw from a live nude model. \$5



- 10<sup>30</sup>pm TV220**  
AS220 brings the work of Rhode Island video artists to public access cable.

### 7 Tuesday

- 5pm Action Speaks**  
AS220's annual series of topical forums tackles Underappreciated Dates In American History. This week, panelists **James Loewen** (Professor and author of *Lies My Teacher Told Me*), **John Brown** (Narragansett Tribal Preservation Office, RI) and **David Glassberg** (Professor, History, U Mass) discuss the failure of The Columbus Quincentennial in 1992. Free

- 9pm Jazz with The Hal Crook Group**  
With **Hal Crook** on trombone, **Bob Gulotti** on drums, **Dave Zinno** on bass and **Rick Peckham** on guitar. \$5

### 8 Wednesday

- 7pm New England Old Time Slow Jam**  
An informal session of Appalachian folk song. Bring down your acoustic instrument and join in, or just come and listen. Free
- 10pm Game Night**  
Jeremy Willis has left AS220 – come see the future of Game Night tonight. Chances are it'll have something to do with board games and beer. Free

### 9 Thursday

- 7pm The Turtles Writers Circle**  
A friendly group of local authors read and discuss each other's work. You're invited to join in. Free
- 7pm Jonathan Stark's Drum-in**  
Bring a drum and bang along with the songs of Jonathan Stark. Free
- 10pm Improv Jones**  
Hilarious improv comedy. \$3

### 10 Friday

- 9pm Arab on Radar, Olneyville Sound System, Lightning Bolt, Sam Hitler, Anthony Arnove**  
Punk rockers help author Anthony Arnove end the sanctions against Iraq. \$5

### 11 Saturday

- 9pm Lovewhip**  
If by some crazy chance you missed these guys in October, don't make the same mistake twice. Tonight there will be salsa dancing, meringue and general booty shaking. Join us and let loose. \$5

# AS220events

## NOVEMBER 12 – 18

### 12 Sunday

**8pm Works In Progress from Kristin Hersh and Erin McKeown**

Advance tickets are available at AS220 and virtuous.com. \$12



Kristin Hersh

### 13 Monday

**9pm Load Records Hoedown**

Names were still being bandied about at press time, but you know that Load Records – the finest name in extreme rock – never lets you down. \$5

**10<sup>30</sup>pm TV220**

Two new episodes each month on Cox Interconnect A.

### 13 Tuesday

**7pm Kevin Sullivan and Friends**

Kevin Sullivan hosts an evening of up and coming jazz beaus. Free

**9pm Jazz with The Hal Crook Group**

Old and young come together in the name of jazz. \$5

### 15 Wednesday

**10pm Game Night**

Trinity Rep had Othello for two months last year – we've got it year-round at Game Night. Free

### 16 Thursday

**5pm Gallery Night**

Trolley your way to AS220 to see new art and grab some snacks. This month, a very special building-wide show in the Cafe Gallery, Upstairs Gallery, Open Window, Brick Wall and the Muse Union Gallery: **Helter Skelter – New Art from the UK**

Contemporary art from **Penelope Hayes, Anne Noble-Partridge, Cherie-Marie Veiderveld, Charlotte Newman** and **Brendan O'Neill**. Free

**10pm Improv Jones**

A fabulous cast of characters flexes its improvisational theater muscles! \$3

### 17 Friday

**Closed!**

### 18 Saturday

**7pm HH220**

A full night of hip hop performance, starting at 7pm with **Jonny 5's** Onomatopoeia. Then, at 9pm, W.A.R. begins. This month's featured performers also include **Kareem, Graphite,** and **Jeep Jack**, an all star crew from Boston and points beyond. Hosted by **Deph Dephiance** and **Kid**. It's \$3 for the whole night if you come at 7pm, \$5 if you come at 9pm.



# AS220events

## NOVEMBER 19 – 25

### 19 Sunday

**8pm** **Pork Chop Lounge Variety Show**

The PCL is back again tonight. A cavalcade of mediocre comedy and fantastic variety all for you! \$3



### 20 Monday

**7pm** **Figure Drawing**

Commune with fellow artists and draw homosapien bodies in their most rugged & primitive form – desnudos. \$5

**10<sup>30</sup>pm** **TV220**

Bert Crenca says "This show is outrageously exciting!". Every week on Cox Interconnect A.

### 21 Tuesday

**9pm** **Jazz with The Hal Crook Group**

Some of New England's finest jazz instructors, concert musicians and sidemen set themselves free every week. \$5

### 22 Wednesday

**7pm** **The New England Old Time Slow Jam**

Come soak in the sounds of Appalachia. You're welcome to bring your guitar, banjo, fiddle, autoharp or accordion and join on in! Free

**9pm** **Treehouse Union**

It's the night before Thanksgiving, so get your old pals together and boogie to the groove sounds of Treehouse Union. \$5

### 23 Thursday

**AS220 wishes you a warm and happy Thanksgiving**

### 24 Friday

**9pm** **The Colonel throws down**

**The Colonel** (Johnny Maguire, formerly of The Royal Crowns) puts his best foot forward, sharing his new hip and zany musical project. He will also be hosting some special guests. Stay tuned for more information. \$6

### 25 Saturday

**9<sup>30</sup>pm** **Last Saturday of the Month Fiesta**

Work off that turkey, baby! Get aerobic with **The Neo-90s Dance Band** and soul diva **Ava!** \$5

**All shows  
always all ages**

# AS220events

## NOV 26 – DEC 2

---

### 26 Sunday

**8pm** **Pork Chop Lounge  
Variety Show**

It's a great first date because you can't look sillier than the goofballs on the stage. \$3

---

### 27 Monday

**7pm** **Figure Drawing**

Unite to fight Monday night doldrums! Get out and draw something beautiful for a few hours! \$5

**10<sup>30</sup>pm** **TV220**

They make video the old fashioned way: they earn it. Tonight on Cox Interconnect A.

---

### 28 Tuesday

**9pm** **Jazz with  
The Hal Crook Group**

Structure and freedom duke it out with tight changes and hair-raising improvs. \$5



I Have No Mouth, And I Must Scream!  
An evening of fantasy and horror silent films  
Friday, December 15 at 9pm

---

### 29 Wednesday

**10pm** **Game Night**

AS220 is magically transformed into a regular old bar for a night. Records, drinks, cards and board games, just like in the old days before people invented art. Free

---

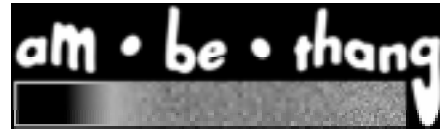
### 30 Thursday

**6pm** **Muse Union  
Performance  
Showcase**

The Muse Union Performance Showcase is an open mike for the 21-and-under crowd, including musical, spoken word, hip hop, dancing, unmusical and not-so-spoken word poetry. Free

**9pm** **am\*be\*thang**

An evening of ambient music for the socially ept. \$5



---

### 1 Friday

**10pm** **The Mean Reds**

The Mean Reds play jazz. \$5

---

### 2 Saturday

**7pm** **HH220**

A hip hop marathon starting at 7pm with **Jonny 5's** Onomapoeia, followed by W.A.R., a powerful night of spoken word with an open mike. \$3 gets you in for the whole night; it's \$5 if you come after 7pm.

# AS220 events

## DECEMBER 3 – 9

### 3 Sunday

**8pm Pork Chop Lounge  
Open Mike**

This is the first Sunday of the month, time to get your act together and perform. Free

### 4 Monday

**7pm Figure Drawing**

Queremos invitarles a dibujar con nosotros por una noche tranquila y inolvidable. Lunes a las siete. \$5

**10<sup>30</sup>pm TV220**

At AS220 we love TV and we want you to love it too. So after Figure Drawing, go home or to a friend's house and tune in to Cox Interconnect A.

### 5 Tuesday

**9pm Jazz with  
The Hal Crook Group**

Jazz that works for your head and for your heart. \$5

### 6 Wednesday

**10pm Game Night**

A low-pressure social evening – come make dozens of new friends or just huddle in the corner with your roommate playing chess. Free



**Free public internet  
access every day**

### 7 Thursday

**5pm AS220 Open House**

Learn everything you wanted to know about AS220 but didn't know who to ask, as the staff tours you through all four stories. Free

**8pm Poetry Slam**

Performance poetry with an open mike and featured readers  
**Reggie Cabico** of NYC and  
**Cristin O'Keefe-Aptowicz**. \$5

### 8 Friday

**7pm Men O Pause:  
Monologues and  
Songs Of Women.**

**Rose Weaver** invites women and men to participate in the writing of her new work in progress about the experiences and multifarious emotions involved in menopause. Rose delivers monologues and songs interspersed with your stories, opinions, and anecdotes. \$5

**9pm The Catatonics**

Rock out with these young fellas who almost always have something to say. \$5



Ted Only Knows

### 9 Saturday

**9pm Josh Ritter,  
Ted Only Knows**

Josh Ritter is one of Providence's top acoustic performers and is always a big hit when he plays here. Ted Only Knows are teen idols who pound the ivories and blast some lyrical rock! \$5

# AS220events

## DECEMBER 10 – 16

---

### 10 Sunday

- 8pm Pork Chop Lounge Variety Show**  
It may be cold outside, and maybe you're feeling broke from shopping, but we'll cheer you up with some comedy and earnest performance. \$3

---

### 11 Monday

- 7pm Figure Drawing**  
Drawing (minus) Pretense (equals) Cathartic experience \$5
- 10<sup>30</sup>pm TV220**  
Video is a great and versatile medium, and this show pushes the envelope. Tune in to Cox Interconnect A and see the future of TV.

---

### 12 Tuesday

- 7pm Kevin Sullivan and Friends**  
Horn man Kevin Sullivan leads the Hal Crook Group's jazz students. Free
- 9pm Jazz with The Hal Crook Group**  
Hal and the guys put their hefty reputations on the line every week on the AS220 stage. \$5

---

### 13 Wednesday

- 7pm The New England Old Time Slow Jam**  
A warm, friendly journey through Appalachian folk song. Free
- 10pm Game Night**  
A wide variety of social lubricants are available, including alcohol and mildly competitive board games. Free

---

### 14 Thursday

- 7pm The Turtles Writers Circle**  
Writers read and critique each other's work. Newcomers are always welcome. Free
- 7pm Jonathan Stark's Drum-in**  
Bring your own drum and join in. Free
- 10pm Improv Jones**  
Shout it, shout it out loud, while they play games of theater! \$3

---

### 15 Friday

- 9pm I Have No Mouth, And I Must Scream!**  
An evening of fantasy and horror silent films, including *The Golem: how he came into the world*, a film by Paul Wegener (1920) *Aelita, Queen of Mars, or Revolt of the Robots*, a film by Jacov Protazanov (1924), and *The Ant and The Grasshopper* (1912) and *The Lily of Belgium* (1915), two animated shorts by Ladislaus Starewicz. All presented with live soundtrack music by **David Farewell**, electronics, **Katt Hernadez**, violin, **Jonathan Vincent**, accordion, vocals. \$6

---

### 16 Saturday

- 8pm Barnum & Buddah Poetry Circus**  
A four part, four hour poetry, music and comedy extravaganza, with **Jack Powers and his Word Warriors and Magical Musicians, R.U. Outavit and The Fire of Prometheus, The Short Attention Span Expanding Poets Collective**, and the former **Boston National Slam Team**. Tickets available in advance on virtuous.com. \$10

# AS220events

## DECEMBER 17 – 23

### 17 Sunday

**8pm** **Pork Chop Lounge  
Variety Show**

Anyone at all can perform at the Pork Chop Lounge: even you, even your mother. And especially you AND your mother. Call Lizzie at 831-9327 to book the whole family. \$3

### 18 Monday

**7pm** **Figure Drawing**

Draw from both sides of your brain. \$5

**10<sup>30</sup>pm** **TV220**

Tonight, stay home and sit in front of the intelligent, artsy TV AS220 puts on Cox Interconnect A.



Mo' Matching Drapes, December 23rd

### 19 Tuesday

**9pm** **Jazz with  
The Hal Crook Group**

Jazz is alive and it walks among us Tuesday nights. \$5

### 20 Wednesday

**10pm** **Game Night**

Soak in the Cafe's ambiance without the distraction of any pesky performers on the stage. Free

### 21 Thursday

**5pm** **Gallery Opening**

In the Cafe Gallery

**Earle Thurber** – paintings  
**David Moroni** – paintings

In the Upstairs Gallery

**Umberto Crenca** – paintings  
**Pamela Murray** – photographs

In the Open Window

**Denise and Diane Tetreault** –  
*Pretty Things*

In the Muse Union Gallery

**Muse Union** – *Visual Poetry*

**7pm** **The Turtles  
Writers Circle**

A different piece is discussed at every Circle – pick up your copy of this week's piece at the AS220 office. Free

**10pm** **Improv Jones**

These sharp minds will make you laugh 'til you cramp! \$3

### 22 Friday

**9pm** **am\*be\*thang**

Rhythmic and ambient sound and light performed before your very eyes. \$5

### 23 Saturday

**10pm** **Mo' Matching  
Drapes, The Jimmy  
James Band**

Lizzie says: "Great rock music at its purest; cute boys at their finest." \$5



The Jimmy James Band

# AS220events

## DECEMBER 24 – 31

---

### 24 Sunday

closed for Christmas Eve

---

### 25 Monday

Have a Merry Christmas



Improv Jones

---

### 26 Tuesday

7pm **Kevin Sullivan and Friends**

Kevin Sullivan leads the Hal Crook Group's students in new jazz adventures. Free

9pm **Jazz with The Hal Crook Group**

Blistering, professional jazz. \$5

---

### 27 Wednesday

7pm **The New England Old Time Slow Jam**

The last Slow Jam of the year. Your geekiest friend will point out that it's also the last Slow Jam of the Millennium. Free

8pm **Baby's Changing**  
A play about all of the horrible things that can happen to a person. This show contains a lot of wrestling! \$6

---

---

### 28 Thursday

6pm **Muse Union Performance Showcase**

An open stage for the under-21 crowd. Free

7pm **The Turtles Writers Circle**  
Write. Read. Meet. Discuss. Free

8pm **Baby's Changing**  
An encore of last night's wrestling epic. \$6

10pm **Improv Jones**  
You will laugh until you actually die. We could get in a lot of trouble for this. \$3

---

### 29 Friday

8pm **Baby's Changing**  
Final night of this theatrical spectacular. \$6

10pm **The Eyesores**  
**Alec Redfearn** and the unusual suspects showcase songs from their new CD *Bent At The Waist*. \$5

---

### 29 Saturday

9<sup>30</sup>pm **Last Saturday of the Year Fiesta**  
Party Y2K style with the **Neo-90s Dance Band**. \$5

---

### 31 Sunday

8pm **Pork Chop Lounge Variety Show presents 2001**

The PCL is bringing you a fabulous show followed by a dance party! Come celebrate with us! \$5

---

---

## Recipe of the Month

This month's recipe, Squashy Tomato Soup, is nice and easy to make. It will be comforting when your oil runs out this winter.

You will need:

2 chopped onions	12 cloves chopped garlic
1/2 bunch celery	2 butternut squash
24 ounces tomato juice	Vegetable broth
Thyme, salt, white pepper	

Sautee onions, garlic and celery. Add squash and enough vegetable broth to boil them in. When squash is soft, add tomato juice, thyme, pinch of white pepper and salt to taste. Puree until smooth

---

### Sandwiches

- #1 roast beef, gruyere, tomato, onion, sprouts, horseradish, mayo or mustard \$4.75
- #2 tuna, melted swiss, lettuce tomato, onion \$4.00
- #3 hummus, tabouleh, carrots, red pepper, gruyere \$4.00
- #4 turkey, brie, lettuce, tomato, cranberry sauce \$4.75
- #5 blackforest ham, pepperoni, provolone, tomato, onion, hot peppers, oil and vinegar \$4.50
- #6 choice of 2 cheeses, carrots, avocado, sprouts, green peppers, hot peppers, lettuce, tomato, hummus \$4.50
- #7 melted swiss, tomato, onion, sprouts, mustard, horseradish \$2.75
- #8 peanut butter, and jelly or nutella \$2.50 with banana \$3.00
- #9 roast beef, boursin, carrots, lettuce, tomato \$4.75 no meat \$2.75
- #10 turkey, green apples, brie, mustard \$4.75 no meat \$2.75
- #11 turkey, roast beef, gruyere, green peppers, carrots, mustard and mayo \$5.00
- #12 blackforest ham, turkey, cheddar, lettuce, tomato, mustard \$4.50

### Build Your Own

- white, wheat, syrian, lettuce, tomato, onion, hot peppers, mayo, mustard, horseradish, oil and vinegar \$2.00
- + maple glazed turkey, black forest ham, cajun roast beef, tuna \$4.00
  - + hummus, tabouleh, avocado 75¢ ea.
  - + cheddar, swiss, boursin, smoked gruyere, brie, feta 50¢ ea.
  - + cranberry sauce, green peppers, red peppers, carrots, sprouts, apples, peanut butter 25¢ ea.

### Other Stuff

- homemade soup  
small \$2.50, large \$3.95
- vegetarian chili \$3.50
- nachos with cheese, sour cream, and salsa \$3.50 with chili \$4.50
- hummus and chips \$2.75
- homemade daily specials for under \$5.00

### Salads

- house salad** romaine, tomato, green and red peppers, chick peas, sprouts and carrots  
small \$3.00, large \$4.50
- santa claus salad**  
spinach, romaine, black beans, avocado, feta, tomato, red onion, sprouts \$4.95
- chef's salad** romaine, tomato, red onions, hot peppers, ham, turkey, swiss \$5.95
- soup with salad  
or half sandwich \$4.75
- fruit salad \$3.00  
with granola and yogurt \$3.50
- ask about our salad dressings

### Drinks

- coffee or decaf, refills, bring your own mug, hot chocolate with steamed milk, hot cider in the winter, fresh lemonade in the summer

### We also have...

- fresh samantha orange juice, grapefruit juice, and 16 ounce juice shakes
- assorted bottled drinks
- beer, wine, and liquor
- yummy baked goods

## Call 861-9190 to place your order.

We cater too!

# join AS220 today

Thanks to our newest members, who brought over \$1500 to our 15th Anniversary Membership Drive in September and October.

Madeleine Akers  
Anonymous  
Jim Benson  
James K. Corcoran  
Cristina M. DiChiera  
Frank J. Esposito, Jr.

Jane Holtz Kay  
Thomas Kersey  
Robert Kieronski  
Daniel Harrop  
Leonard Hoffman

Riva Leviten  
Drake Patten  
Natasha Ribeiro and  
Keith Thompson  
Frank Robinson

Gail Schilke  
DG Siegel  
William Smyth  
Paul D. Solomon  
Jeff Terranova

**Get your lifetime pass to AS220  
with a \$250 membership gift!**

## What does an AS220 Membership give you?

### give \$30 and get

- all AS220 mailings
- recognition in printed materials
- four free passes to AS220 events

### give \$60 and get

- *all of the above plus*
- an AS220 membership card good for 20% off admission to AS220 events
- an AS220 t-shirt
- 2 extra free passes!

### give \$120 and get

- *all of the above plus*
- a membership card upgraded to free admission to AS220 events!

### give \$250

- *get it all ... PLUS*
- a lifetime pass to AS220!

### give \$500

- *get it all ... PLUS*
- 2 lifetime passes to AS220!



Clip-n-send today! What are you waiting for?

**YES!** I must join and keep AS220 a permanent home for the unjuried arts.

Sign me up for:

\$30    \$60    \$120

\$250    \$500    \$\_\_\_\_\_

I have enclosed a check made payable to AS220.

Please charge my Visa/MC:

# \_\_\_\_\_

exp. date: \_\_\_\_/\_\_\_\_

I decline my benefits to maximize my contribution.

I prefer to be anonymous. Please do not list my name.

My company has a matching gift program, and I have enclosed the forms.

I would like to receive more information about:

Volunteer Opportunities

Booking a Performance

Booking a Gallery Show

Name (please print) \_\_\_\_\_

Address \_\_\_\_\_

\_\_\_\_\_

\_\_\_\_\_

Phone Number \_\_\_\_\_

Favorite AS220 event(s) \_\_\_\_\_

\_\_\_\_\_

\_\_\_\_\_

Please mail completed form with membership gift to: AS220, 115 Empire Street, Providence, RI 02903. Donations are tax deductible to the maximum extent allowed by law.

**AS220**

115 Empire Street  
Providence, RI 02903

**RETURN SERVICE REQUESTED**

Non-profit Org  
U.S. Postage  
**P A I D**  
Providence, RI  
Permit No. 1764

