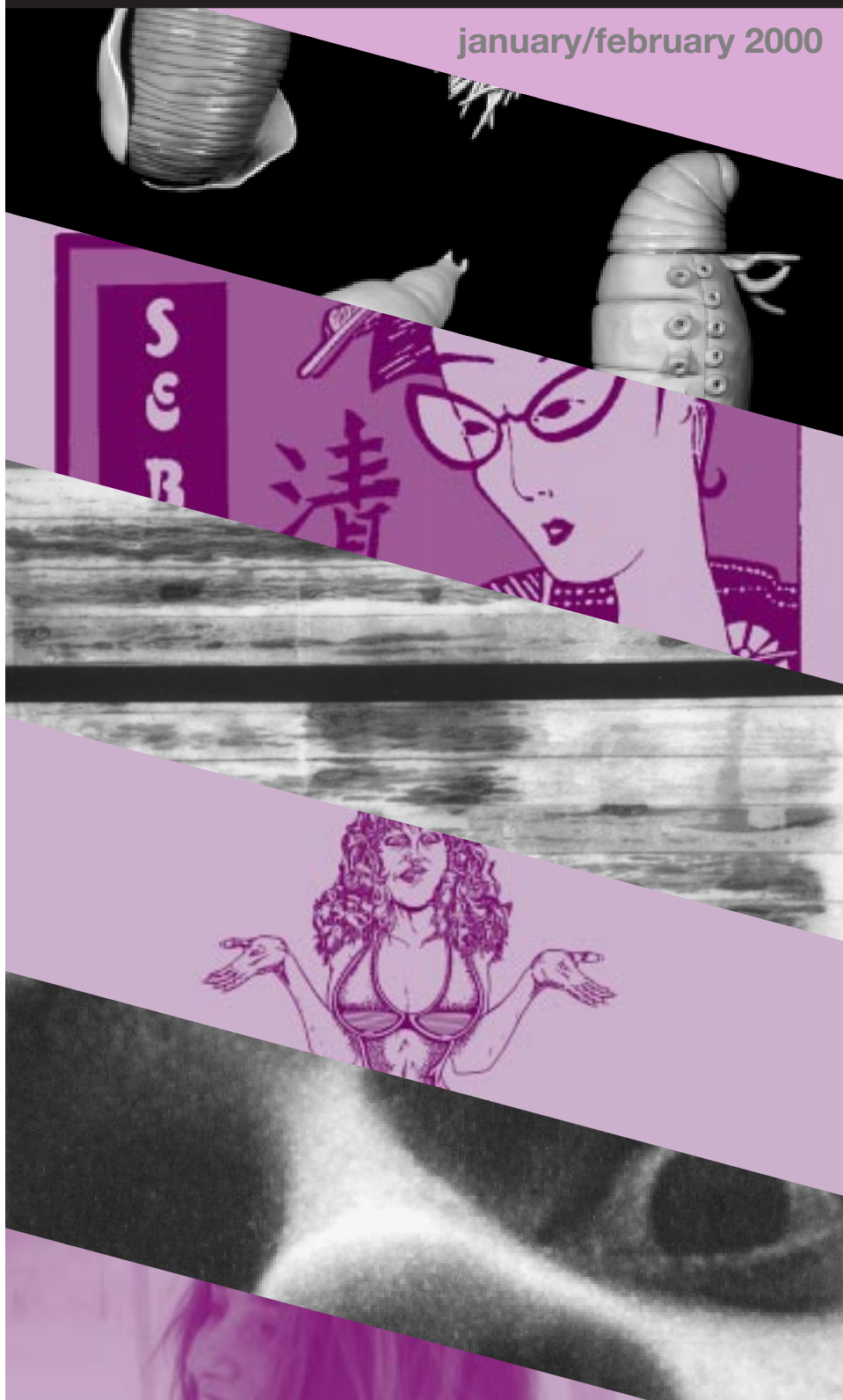


AS220

january/february 2000



AS220 Mission Statement

We, the Citizens of Rhode Island and Providence Plantations, associate ourselves for the purpose of providing a local forum and home for the arts, through the maintenance of residential and work studios, galleries, and performance space. Exhibitions and performances in the forum will be unjuried and open to the general public. Our facilities and services are made available to all artists who need a place to exhibit, perform, or create their original artwork, especially those who cannot obtain space to exhibit or perform from traditional sources because of financial or other limitations.

In This Issue

What is AS220?	2
Use AS220	4
Muse Union News	5
AS220 Galleries	6
Staff News	8
AS220 Stage	10
Community Darkroom	12
AS220 Events	13
Perishable	21
Groundwerx	21
AS220 Cafe	22
Complex News	23

Thanks to

Edward “Ned” Dwyer and **Margaret Lewis** of RISD, for the help and resources they provided to Rhode Island Cuban Exchange artist Luisa Marisy.

Keith Munslow and **Matt Obert**, for the hours they spent creating this year's membership mailing, and **Jim Pfeiffer** at Black Cat Graphics, for printing the mailers on the weekend after Thanksgiving.

The City of Providence, for the Community Development Block Grant that allowed us to upgrade our heating system and our roof, along with the

performance space's new ventilation system.

Tom Sgouros, for installing a ceiling fan in the third floor kitchen.

David Panofsky, for expert technical advice on networking with Linux.

Steve Durkee, for his work planning the expansion of our building.

Erin McKeown and **Pam Murray**, for helping paint the new room in the basement.

Marlene and **Tim** for their continued support of the Community Darkroom.



This newsletter appears six times annually, and is distributed through the mail and at various locations throughout the state. If you would like to be added to our mailing list, or if you're on it and want to be removed, please contact Geoff at 401-831-9327 or geoff@as220.org.

use

performers

To book our stage

AS220's stage is open to any Rhode Island artist who has original material to present. Get a sample of your work to **Lizzie Araujo** at AS220's office. Give her two weeks to review your work, then get in touch with her by calling 831-9327 on Tuesdays or Wednesdays between 2pm and 6pm.

visual artists

To book our Galleries

Any Rhode Island artist is welcome to exhibit in AS220's galleries. To book your show, call **Kim Kazan** at 831-9327 or email her at kazan@as220.org.

To use the Community Darkroom

Contact **Scott Lapham** at 274-1299 to schedule time. See page 12 for more information.

To use the Community Printshop

If you're a silkscreener (or if you'd like to learn how to be one), come down to one of the open training sessions held by **Pete Cardoso** every Tuesday at 6:30.

To draw from life

Figure Drawing sessions offer a weekly opportunity to draw and study the human form. Come by the Cafe Monday evenings at 7pm; bring your own materials and \$5 to help pay the model.

writers

To critique and be critiqued

The Turtle's Writers Circle meets on the second and fourth Thursday of every month at 7pm to discuss each other's work. Newcomers are always welcome.

Our calendar abounds with opportunities for writers interested in reading their work onstage. See pages 13-20 for more information.

film/video makers

To show your work

TV220 brings the work of Rhode Island artists to public access cable every week. Drop off submissions at the AS220 office or contact **Amy Zimmitti** at zinsular@as220.org.

You can also book a screening on our stage; see *performers*, above, for more information.

18 and under

To get out of the house

All events are all ages, except the Pork Chop Lounge, which has a loosely applied R rating.

The Muse Union wants you! See page 5 for more information.

everybody

To use a computer

Free internet access is available in our Cafe during the Cafe's operating hours. The Broom Closet Computer Lab is also open on the second floor from noon to 5pm, Tuesdays through Fridays.

To eat and meet

The AS220 Cafe opens at 10am on weekdays and 7pm on Saturdays and Sundays. See page 22 for the menu and the recipe of the month.

To get a roof over your head

AS220's studio program offers low-cost housing to working artists in a cooperative living environment. For more information contact **Shawn Wallace** at 831-9327 or shawn@as220.org

museunionnews

By Ethan Vlah

Forging ahead with its mission to integrate the arts and education, the Muse Union has established chapters at three local high schools: The Metropolitan Center, the Rhode Island Training School, and Mount Pleasant High School. A group of high school youth, professional artists, school administrators and community volunteers, The Muse Union is an association for creativity, leadership, and empowerment for youth. The Union holds the values of inclusivity, self-discovery and diversity essential to its mission.

Eventually, the Union will be run by local youth; in the meantime, AS220 and the Corporation For National Service have teamed up provide VISTA Members to serve as recruiters and organizers. **Margarita Morris, Ethan Vlah** and **Melissa Emma** are now working as Muse Union ambassadors, and in January VISTA Leader **Gina DeMartino** will be coming to Empire Street to help administer the program.



The creation of a Muse Union Central Committee downtown has hastened the day when representatives from the Met, Mount, and RITS will take the reins from the VISTA organizers and run the Union themselves. Currently, seven student representatives are attending the weekly Committee meetings.

Come and see what we've already accomplished. The much-awaited release of the AS220 Muzine happened at the end of December, showcasing the two dimensional work of students; copies are available upon request. Also, our latest visual arts show at AS220, *Gods and Goddesses, Heroes and Heroines*, is up in the second floor gallery. And, of course, our Poetry Workshops are held on most Saturdays from 11 am to 1 pm.

Finally, keep your senses open for these upcoming Muse Union events: The Performance Showcase (formerly 5 Minutes Tops) will be held on January 27th and February 24th at 6pm. Admission is free.

A traveling Muse Union Gallery will begin at the Rhode Island Training School in January, with the first two Muse Union visual art shows, *Musings* and *Art Is*, combined. Students will be able to add to them in their own school's gallery as the show travels.

galleries

December 16 – January 15

In the Cafe Gallery

Pete Cardoso and Mark Pedini –
Silkscreen Prints

In the Upstairs Gallery

Leif Goldberg – *The Last Plot of Untilled Land*

In the Open Window

Peter Fuller – Installation

On the Brick Wall

Jill Colinan – *99 Cans of Beer on the Wall*



Mark Pedini and Pete Cardoso, Silkscreen Prints

Mark Pedini and Pete Cardoso have been active players on Providence's lively silkscreen-and-wheatpaste scene, producing work that bridges the gap between fine art and commercial art. This show will feature work created in AS220's Community Printshop, a resource created by Pedini and currently run by Cardoso.



Leif Goldberg, Mixed Media

Goldberg's *The Last Plot of Untilled Land* is drawings, prints and hand-cranked mutoscopes depicting the remaining souls of the natural world as the world is being rapidly overtaken by the massive technological force.

Featured Sculptor

On the sidewalk and in the 2nd floor hallway sculpture by Nicholas Baker Swearer

January 20 – February 12

In the Cafe Gallery

Darcy Tozier – Paintings
Alfred Rivera – Mixed Media

In the Upstairs Gallery

Jennifer Raimondi – Sculpture

In the Open Window

Bess Williamson – Mixed Media
rocketship, lipstick, liver, heart

On the Brick Wall

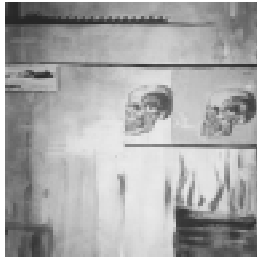
Ryan Rooney – Mixed Media



Darcy Tozier – Paintings

"The work I have been exploring recently is that of the people who influence my life in the present. I spend little time in the present, often lost in daydreams of the future or nightmares of the past. Most of my work until very recently has been a form of self help, if you will; an effort to understand the childhood experiences that influence who I am today. Recently, however, I have had the desire to know and

live in the present; a world I have been known to ignore. Curiously the two strains of work are worlds apart. That of the past is larger than life: distant, simplified and primary in color and shape, reflecting my capacity for memory. Yet the subject is weighted and often disturbing, reflecting the overwhelming strength of the emotions I continue to harbor. My most recent work of the here and now is much smaller, more intense and detailed in color and form. Yet, the emotions derived from these works are pure and simple, candid, calm snapshots of the people who are capable of bringing me back the present. It is my past that haunts me and the present that provides me with relief from those hauntings."



Alfred Rivera, Mixed Media

Using mixed media, Rivera portrays the familiar world of man reignited, as if the sun has gone black and a new penetrating energy is being thrown upon our dreams, aspirations and reality. In a coldly scientific manner the human animal is exposed, rendered naked and measured against the complex, swirling worlds of thought and feeling, which we both create and are created by.



Jennifer Raimondi, Sculpture

Jennifer's recent work makes visual comparisons between human, animal, plant and fungal patterns of sex, reproduction and growth. In a quiet way, however, the work exudes a childlike sexuality. While these pieces do suggest sexual organs and functions, they also express a broader sensuality common to children and often lacking in adults. Raimondi explains: "I have established a direct mental connection with my own childhood behavior in order to arrive at the source of these ideas. Analyzing the instincts that drove me to experiment with life, sex and death at a very young age is the crux of my work. My private introspection into my personal developmental history has resulted in art objects that amuse and disturb my audience, thus provoking a similar introspection in each viewer."

Ryan Rooney, Mixed Media

"Most of my work is a reflection on how I view society of which I am an unwilling participant. My earlier works reflect more of the darker aspect of my life and become increasingly introspective as time goes by. The method to my madness is utilizing whatever media is at hand and twisting reality with my warped perception on life. My later work is done mainly in acrylic. However as time progresses I have begun to experiment with new mediums. Venturing beyond paint to encompass a total mixed media approach enables me to portay to the eye a vision derived from the inner depths of my mind."

February 17 - March 11

In the Cafe Gallery

Alan Bean – Chromoskedasic Prints

In the Upstairs Gallery

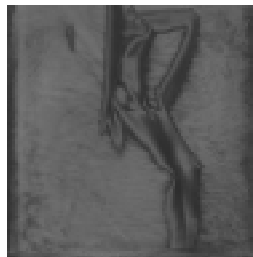
Neal Walsh – Paintings

In the Open Window

Mary Geisser – Paintings

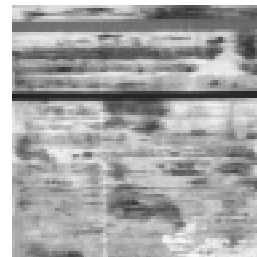
On the Brick Wall

David Wilcox



Alan Bean, Chromoskedasic Prints

Chromoskedasic Prints are images created on black and white photographic paper in which the underexposed (whiter) regions of the paper contain colors. The colors are created by changing the silver particles size during a second exposure to light and chemicals. Because of the non-standard process each final image is unique to itself and can contain shapes and colors that were formed not by the artist, but by the process itself. Bean's only hand in the final image is deciding when to stop the process.



Neal Walsh, Paintings

In the process of his work, Neal's goal is the coming together of disparate elements to create a unified, cohesive whole is the goal. Although the elements are as different as gold leaf, wax, oil paints, masking tape and varnishes; the created amalgamate can be described as quiet in its unity. The surfaces of his work offer a boundary into the three dimensional.

Gallery Hours

AS220's Cafe and Open Window Galleries are open during the Cafe's operating hours (10am to closing on weekdays, 7pm to closing on Saturdays and Sundays).

The Upstairs, Muse Union and Brick Wall Galleries are open Tuesday to Friday, noon to 5pm, Saturdays by appointment.

staffnews

Farewell Sheri

In January 2000, **Sheri Van Antwerp Griffin** will leave the AS220 staff after over five years of dedicated service to pursue new adventures.

Sheri's relationship with AS220 stretches back to AS220's Richmond Street location and the renovating of 115 Empire Street. She joined the AS220 staff as Gallery Director in May of 1994. Her administrative skills were soon recognized, and in the Fall of 1994 she became AS220's Development Director.



Sheri's tenure spanned a time of enormous growth for AS220, and her cool head, sharp memory and long-term vision made her an indispensable member of the AS220 team. Her crowning achievements include the \$325,000 four-year grant AS220 was awarded last fall from the Lila Wallace-Reader's Digest Fund, which finally put AS220 in the crosshairs of national funding organizations. Sheri is also responsible for the creation and coordination of the annual Fool's Ball fundraiser, which has, after five years, grown into a week of programming which brings scores of new faces and key funds in the door each year.

Sheri gave AS220 plenty of notice, but we're still busy covering her responsibilities. Programming Director **Lizzie Araujo** will be stepping up to take over as head of the Fools Ball, and **Joelle Jensen** (see page 9) will be arriving to take care of grant compliance and research. Sheri's commitment to AS220 has never wavered, and we look forward to her continued involvement, even as we wish her well in her transition.

Bert pipes up

There are many folks who have made great contributions to AS220 over the years. We are greatly indebted to them all. With that said, it is important for me to give special recognition to Sheri Van Antwerp Griffin. Sheri's unselfish contribution to AS220 is, for me, only one part of her gift.

I have worked closely with Sheri for five years. Sheri not only upgraded the image and presentation of AS220,

she has also taught me. Over the past five years I have grown into a professional arts administrator, and I credit Sheri's influence for much of this growth. Her patience and caring will be sorely missed, and I hope our friendship will continue. Sheri, you are irreplaceable.

Umberto Crenca
Artistic Director

Wage Hike

On December 14th, the AS220 Board of Directors unanimously voted to raise staff salaries to \$7.75 per hour. The ten years since AS220 hired its first employee, the office staff has all received minimum wage, which is currently \$5.65.

This decision will ease several sources of pressure. By keeping wages at the lowest legal minimum, AS220 has forced fulltime staff to take second jobs and freelance gigs.

The low pay has limited the pool of applicants available to fill empty positions.

Why \$7.75? "The extra \$2.10 was the most we could do, considering the current fiscal realities," says Board President **Dennis DiBattista**, "but in the next year we expect to bring everybody up to median income."

As wages rise, AS220 remains committed to its policy of paying all its administrators at the same rate.



Welcome Joelle

Joelle Jensen will be joining the AS220 Office in January as a VISTA Member. She'll be taking over grant writing and compliance duties from departing Development Director **Sheri Van Antwerp Griffin**. Her background in printmaking and photography ensures that she'll also be getting involved in the development of AS220's Community Printshop and Darkroom.

A graduate of both the University of Wisconsin and the Kansas City Art Institute, Joelle's got almost two years' experience as board member and co-president of River West, a grass roots community art center in Milwaukee. When Joelle visited AS220 on a particularly chaotic day in December, she displayed the serenity and sense of humor so crucial to life at AS220, and we're looking forward to working with her this year.

A New Face in the Cafe

The AS220 Cafe welcomes **Maggie Haggerty** to its solid six-person staff. Maggie comes to us from Manhattan via Northhampton, Massachusetts, a city that's been bringing Providence a number of quality emigres lately, including Maggie's co-worker **Jeremy Willis**. Maggie's academic background is in film, with a heavy emphasis on theory and not a lot of production experience. So, while you may not be seeing any of her work soon, she can help put theoretical polish on your artist's statement.



stage

Magic in the City

The magnificent **Marc Gilday** will be visiting AS220 on Tuesday January 4th. Gilday, hailed by many to be one of the "last of the master magicians", will present some of his latest and most amazing creations including his brand of Cabalistic Conjuring.

This is your chance to see a genuine magician, up close and personal. To assure you get to witness Marc Gilday here in Providence, get your tickets now before they all disappear. Advance tickets available at AS220, 831-8327.



Booking the stage

AS220's stage is open to any Rhode Island artist who has original material to present to the public. To book time on the stage, send a letter introducing yourself, along with some documentation of your work, to **Lizzie Araujo** at 115 Empire Street, Providence RI 02903. After about two weeks, get in touch with Lizzie to book your show. She can be reached at 831-9327 between 2pm and 6pm Tuesdays and Wednesdays.

AS220's calendar features a number of monthly and weekly evenings devoted to specific genres, including:

- Acoustica, featuring solo musicians, booked by **Giedrius Srougis** (January 8, February 5)
- The Pataphysical Circus, devoted to avant-garde/experimental music and performance, booked by **Jonathan Thomas** (January 15, February 11)
- Frequency Lounge, full of ambient music and

visuals, booked by **Tim O'Keefe** (January 28, February 25)

- The Variety Show: raucous evenings of five minute acts, run by the Pork Chop Lounge; call 432-2247 to book your slot. (Every Sunday)
- Fat Cat Productions: indie rock sets, booked by **Mary Geisser** (January 7)

If you think you'd go well on one of these nights, let Lizzie know!

Destiny's Child: A Festival of Faerie Film and Performance to Benefit Faerie Camp Destiny

In the queer-positive tradition of 'Stravaganza, **Richard E. Bump** and **Terry Roethien** (aka Dogwood Bark), of New York City, present *Destiny's Child: A Festival of Faerie Film and Performance to Benefit Faerie Camp Destiny* on Saturday, January 22 at AS220 at 9pm.

The cabaret-style format of *Destiny's Child* will feature the eclectic talents of the northeast Radical Faerie community. Both Super 8mm films and videos, almost all Rhode Island premieres, will be screened. Roethlein's film, *Tattu*, has been shown at numerous film and video festivals around the country. Bump will show several works on Super 8 including *A Day at Moonstone* and new footage which was shot on a recent cross-country road trip. Scheduled videos include *Faerie Fancy* by **Jim Jackson** of Cambridge, MA and *Pony Portraiture* by 17-year-old queer activist **Matt Wolf** from San Francisco. Performers from New York



City include **Agnes de Garron**, choreographer, puppeteer, actor, dancer and an original founding member of the infamous Sisters of Perpetual Indulgence, and **C. Ruby Falls**, singer, monologist and fire-eater. There will be a special guest appearance by **Princess Pearl of Providence**.



Faerie Camp Destiny is the Radical Faerie sanctuary and community founded in Grafton, Vermont in 1997 out of a desire for building a permanent sustainable faerie sanctuary in the northeast.

Situated on over 150 acres of pristine, undeveloped land 30 miles north of Brattleboro, Vermont, Destiny is a volunteer-run nonprofit that serves as the primary gathering site for the northeast Radical Faeries. Faerie Camp Destiny is open to everyone, although most of those who identify as faeries are queer men. Destiny is a living experiment in creating intentional community, developing queer identity, challenging notions of sexuality, practicing ritual and honoring our relationship to the land.

For more information on the show, contact Bump at (401) 941-6398. For more information on the Radical Faeries and Faerie Camp Destiny, visit their web site at www.faeriecampdestiny.org.

darkroom

Community Darkroom

The AS220 Community Darkroom is the only public access darkroom in Rhode Island of professional quality, providing black-and-white facilities to photographers of all levels.

Call Darkroom Manager **Scott Lapham** at 274-1299 or email scott@as220.org to schedule your first monitored session. After two sessions with a monitor, you will be a darkroom member and can start scheduling blocks of time. The darkroom is available during the AS220 Cafe's operating hours.

Darkroom time is purchased in blocks, good for one year:
4 hours – \$20 10 hours – \$45 20 hours – \$80 40 hours – \$140

Photography Classes

The Community Darkroom will be hosting two classes this winter. These are the same classes listed in the last newsletter, but the dates have been changed. Instructor **Glenn Turner** is a RISD graduate and professional photographer. Enrollment will be limited to 8 people; call **Scott Lapham** at 274-1299 to preregister.

An Introduction to the Camera

Tuesdays at 7pm
January 11th to February 15th

This six week class is geared towards people interested in learning the basics of exposure, lighting and composition in photography. Weekly discussions, demonstrations and assignments aim to expand students' understanding of the fundamental concepts necessary for making consistently good pictures. Basic

questions such as film choice, camera operation and lens selection will also be covered. Students will need a 35mm camera which can be operated manually, and will be required to shoot and process one roll of film per week. This is not a darkroom class — no developing or printing materials will be a part of this course.

An Introduction to the Darkroom

Tuesdays at 7pm
February 29th-April 4th

This six week course is designed to teach intermediate level photographers the fundamentals of black and white processing and printing. A working knowledge of the camera and film exposure is required to produce negatives for use in the class, taught through demonstrations and hands-on workshops.



events

JANUARY 1 – 8

1 Saturday

We're closed and recovering.
We hope you had a safe night.

2 Sunday

I know it's hard to believe,
but we're still recovering!

3 Monday

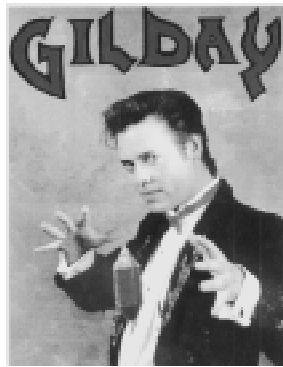
7pm **Figure Drawing**

Join your host **Neal Walsh** and
this week's model for two hours of
sketching your troubles away. \$5

10³⁰pm **TV220**

Something's coming, something
good and it's coming from your
T.V. Watch some great video art
at home. Check it out on Cox
Interconnect Channel A.

4 Tuesday



7pm **Magic in the City**

Come let the
magnificent
Marc Gilday
baffle, dazzle
and delight
you. Advance
tickets
available at
AS220. \$5

9pm **Jazz with The Hal Crook Group**

Featuring international jazz
composer and author **Hal Crook**
on trombone with **Rick
Peckham** on guitar, **Dave Zinno**
on bass and **Bob Gulotti** on
drums. An evening of exceptional
music at a bargain price. \$5

5 Wednesday

6pm **A Night of Poetry Performance**

This program gives you the
opportunity to perform your work
and discuss it with fellow writers.
Original work only please. Free

8pm **Game Night**

Play some board games, slow
dance a while and buy a beer from
your host, **Jeremy Willis**. Free

6 Thursday

5pm **AS220 Open House**

If you've never been to AS220,
or if you've never ventured
beyond the cafe, this is your
chance to inspect the place
from head to toe. Free

8pm **Poetry Slam**

A spoken word extravaganza with
a featured reader, an open mike
and a Slam. \$4

7 Friday

10pm **Kelly Walsh, L'Avventure**

Kelly Walsh plays with a full
band to celebrate his CD's
release. Special guests
L'Avventure fill out the bill. \$5

8 Saturday

9pm **Acoustica**

Has electricity got you down?
Come and listen to instruments the
way they were meant to be
heard... unplugged. \$5

11^{to} 1pm **AS220 Poetry Workshop**

Come share your work with this
group led by **Demian Yattaw**. Free

events

JANUARY 9 – 15

9 Sunday

8pm The Pork Chop Lounge presents The Variety Show
Put those New Year's resolutions to the test at AS220's weekly extravaganza: a slew of five-minute acts, hosted by the Pork Chop Lounge's stable of lunatics. To get into the show just call The Act Line 431-2247. \$3

10pm kilowatthours & Helgeson Story
kilowatthours are a four piece from Louisville, KY. The lineup lends itself to the anthemic "story-on-stage" aesthetic. \$5

10 Monday

7pm Figure Drawing
There'll be posing until closing with Neal and the live model. \$5

10³⁰pm TV220
Just when you thought you'd seen it all, TV220 will knock your socks off. Check it out on Cox Interconnect Channel A.

11 Tuesday

7pm Marimba Magic! Xylophone workshop
If you ever wanted to bang on a metal keyboard, here is your chance! And it's free!

9pm The Hal Crook Group with Bobby Brookmeyer
Valve trombone whiz joins Hal and the gang. \$5



12 Wednesday

7pm The New England Old Time Slow Jam
An open learning session covering the world of Appalachian folk song. Free

9³⁰pm RI's Sounds of the New Millenium
See some emerging talent from the local hip-hop community. This event is a release showcase of **Pistol Pete's** new record "Blood Rich" with special guests **Sosa Brothers & Jud-is**. Presented by the crew at NaYah Records. \$5



13 Thursday

7pm The Turtles Writers Circle
Be a part of a lively discussion group. Each week a group member's work is chosen, read and critically reviewed. Free

10pm Improv Jones...
will weave insane scenarios out of your suggestions. \$3

14 Friday

7pm Disease
A revolutionary sight and sound collaborative presented "with the intention of reconfiguring the identity matrices of the audience." \$5

10pm The Jerry Bergonzi Quartet
Jerry Bergonzi on the sax. His resume is too long to list here; let's just say he's been around the block! \$5

15 Saturday

10pm The Pataphysical Circus
This evening of fun, games and manifestos hosts Ron Bianco's latest project "Providence-The Band." \$5

events

JANUARY 16 – 22

16 Sunday

8pm The Pork Chop Lounge presents The Variety Show
It's a brand new century and they have what it takes to keep your millenium transition light! And remember, you too can be in the show; just call The Act Line 431-2247. \$3

17 Monday

7pm Figure Drawing
Do your art a favor and get back to basics with Neal and the live model. \$5

10³⁰pm TV220
Stay home and watch some great TV tonight on Cox Interconnect A.

18 Tuesday

7pm Marimba Magic! Xylophone Workshop
Nonmusicians are magically transformed when instructor **Michelle Kaminsky** shows them these instruments. Free

9pm Jazz with The Hal Crook Group
Please, no jazzercise. \$5



19 Wednesday

7pm Drum-in with Jonathan Stark
Join in the noise as Jonathan and this month's guest jam their hearts out. Free

20 Thursday

5pm Gallery Night
Tonight AS220 will be celebrating the openings of:

In the Cafe:
Darcy Tozier - Painting
Alfred Rivera - Mixed Media

Upstairs Gallery:
Jennifer Raimondi - Sculpture

Open Window:
Bess Williamson

Brick Wall:
Ryan Rooney

Featured Sculpture:
N. Swearer

10pm Improv Jones
You'll try to explain to everyone at work just why **Improv Jones** is so funny, but they won't get it. With improv, you just have to be there. \$3

21 Friday

9pm Stream Creative Music Series
Stream presents **Sawari**, a Boston improvisational trio, along with **McGill/Nicotina Duo**, with special guest **Alec Redfearn**. This evening is dedicated to improvisational music. \$5

22 Saturday

11^{to} 1pm AS220 Poetry Workshop
This workshop is open to anyone who writes and wants to share. Free

9pm Radical Faerie Benefit
Destiny's Child: A Festival of Faerie Film and Performance to Benefit Faerie Camp Destiny. See page 11 for the whole story. \$10

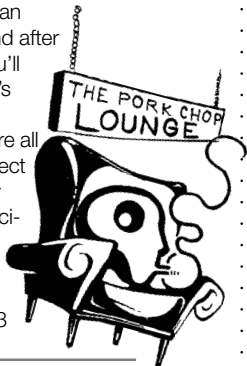
events

JANUARY 23 – 29

23 Sunday

8pm The Pork Chop Lounge presents The Variety Show

This show is an institution, and after you see it you'll know why: it's because the performers are all insane. To inject some of your own eccentricities into the mix, contact: The Act Line 431-2247. \$3



24 Monday

7pm Figure Drawing

Fill your pad while DJ Neal spins some contemplative tracks. \$5

10³⁰pm TV220

You may think that TV is all bad, but this show will change your mind. Check it out on Cox Interconnect Channel A.

25 Tuesday

7pm Marimba Magic! Xylophone workshop

The classes are taught by **Michelle Kaminsky** who leads The Old Time Slow Jam. Free

9pm Jazz with The Hal Crook Group

Make this week the week when you finally make it down here. \$5

26 Wednesday

7pm The New England Old Time Slow Jam

Bring an instrument, and learn some great old American folk songs. Free

27 Thursday

6pm Performance Showcase

An open stage session for teens involved with the Muse Union, a program running in three local high schools that encourages teens to discover themselves creatively through different mediums. Free

7pm The Turtles Writers Circle

This week's meeting will be held in another room in the building. Please check in at the Cafe to find out where to go. Free

10pm Improv Jones

There's no camera tricks and no editing, just real live hilarity pulled from the ether right before your eyes. \$3

28 Friday

10pm Frequency Lounge

A night of ambient sound and vision featuring **Sayaka** from Japan, **Tim O'Keefe**, **DJ Pauloo** and more. Visuals by **Toilet Paper Productions**. \$5

29 Saturday

11^{to} 1pm AS220 Poetry Workshop

An open class led by **Demian Yattaw**. Free

7pm Ground Zero

Join **Kareem Caines** and friends in an evening of poetic hip-hop and spoken word. There is also an open mike. \$2

10pm The Last Saturday of the Month Fiesta!

Dance, dance, dance with **The Neo-Nineties Dance Band**. \$5

events

JAN 30 – FEB 5

30 Sunday

8pm The Pork Chop Lounge presents The Variety Show
Come on down to the Pork Chop Lounge. You can smoke a cigarette and have yourself a drink, just come on down. To book yourself into the show contact: The Act Line 431-2247. \$3

31 Monday

7pm Figure Drawing
It's not a class and it's not a club; it's just good hard work with Neal and the live model. \$5

10³⁰pm TV220
It's a great gift to be able to sit at home and have the art come to you. Check it out on Cox Interconnect Channel A.

1 Tuesday

7pm Marimba Magic! Xylophone workshop
Instructor **Michelle Kaminsky** (leader of The Old Time Slow Jam) invites you to come down to the Cafe and unleash the xylophonist within you. A dozen specially designed wooden and metal xylophones of all sizes make it easy for musicians and non-musicians alike to fill the room with joyful chiming sounds. Free



9pm Jazz with The Hal Crook Group
Crook, Peckham, Zinno and **Gulotti** touch earth weekly to bring us news of a better place. \$5

2 Wednesday

6pm A Night of Poetry Performance
Perform your poetry on stage and discuss it with other poets. Free

8pm Game Night
Jeremy Willis invites you to play your favorite board games — from the contemplative abstract strategy of chess to the no-holds-barred action of thrill-packed games like Operation! Free

3 Thursday

5pm AS220 Open House
If you've never been to AS220, or if you've never ventured beyond the cafe, this is your chance to inspect the place from head to toe. Free

7pm Poetry Slam
Watch as the poetic professionals hone their skills for the nationals and perform at the open mike. \$4

4 Friday

9pm Chemistry 2000 A Hip-Hop Performance Workshop
There is an open mike, a DJ spinning original beats and a chance to try your hand at being a B-Boy. Presented by **Next Magazine**. \$5

5 Saturday

11^{to} 1pm AS220 Poetry Workshop
Discussion and instruction, led by **Demian Yattaw**. Free

9pm Acoustica
Another installment of the best of local acoustic artists. \$5

events

FEBRUARY 6 – 12

6 Sunday

- 8pm** **The Pork Chop Lounge presents The Variety Show**
Every week a different show; every week a ton of heart. Be a part of the show and feel the beat — call The Act Line at 431-2247. \$3

7 Monday

- 7pm** **Figure Drawing**
Draw from life — it's cheaper than art school. \$5
- 10³⁰pm** **TV220**
Tune in to Cox Interconnect A for TV220, the best of local video shorts. Why leave the house when art comes to you?

8 Tuesday

- 7pm** **Marimba Magic! or, How to bang a xylophone 101**
Instructor **Michelle Kaminsky** (leader of The Old Time Slow Jam) invites young and old to learn the mysteries of melody and harmony by hitting inert objects with mallets. The specially designed xylophones used in this workshop make it impossible for beginners to play a “wrong” note. Free
- 9pm** **Jazz with The Hal Crook Group**
Hang up those headphones and spend an evening with some living legends: **Hal Crook** on trombone with **Rick Peckham** on guitar, **Dave Zinno** on bass and **Bob Gulotti** on drums. \$5

9 Wednesday

- 7pm** **The New England Old Time Slow Jam**
An open learning session covering the world of Appalachian folk song. Free

10 Thursday

- 7pm** **The Turtles Writers Circle**
Join this growing group of writers as they discuss their works-in-progress. Free
- 10pm** **Improv Jones**
Your date will find you irresistible after seeing these guys make comic mincemeat out of your suggestions. \$3

11 Friday

- 9pm** **The Pataphysical Circus with The Stream Orchestra**
The Stream Creative Music Program puts together a 15-piece improvisational orchestra. And not only that, you get all the Pataphysical fun to boot. Manifestos, games, surprises, performances and oh so much more! \$6

12 Saturday

- 10pm** **The Preachers and Stella Mudslide**
Stella Mudslide was voted “Best Unsigned Band” by a couple of really prominent people. They’ll be serving hors d’oeuvres and **The Preachers** as well. \$5
- 11 to 1pm** **AS220 Poetry Workshop**
Poetry investigations led by Mr. **Demian Yattaw**. Free

events

FEBRUARY 13 – 19

13 Sunday

8pm The Pork Chop Lounge presents The Variety Show

A live band, live acts, live comedy and booze. What more could you desire? To inject some of yourself into the mix contact: The Act Line 431-2247. \$3

14 Monday

7pm Figure Drawing

This year, make Valentine's Day special for your sweetie with some sketches of a nude stranger. \$5

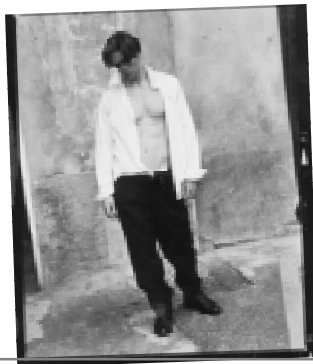
10³⁰pm TV220

A loaf of bread, a jug of wine, and a softly gleaming cathode ray tube: tune in to TV220 on Cox Interconnect A.

15 Tuesday

9pm Jazz with The Hal Crook Group

Jazz IS their day job. Come hear how it's done. \$5



16 Wednesday

7pm Drum-in with Jonathan Stark

This is one of our most interesting new programs. A musician comes down to play as a special guest of Mr. Stark, and you can join in. So bring an instrument and jam on, brother. Free

17 Thursday

5pm Gallery Night

It's Gallery Night again; ride the trolley down here and join the party. Tonight AS220 will be celebrating the openings of:



In the Cafe:

Alan Bean – Chromoskedastic prints

Upstairs Gallery:

Neal Walsh – paintings

Open Window:

Mary Geisser

Brick Wall:

David Wilcox

Featured Sculpture:

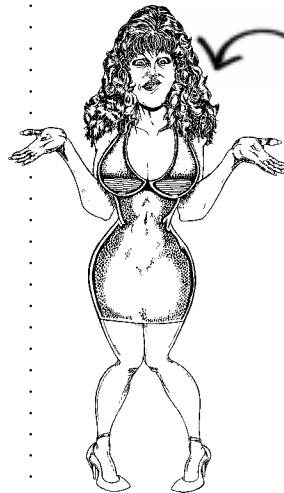
N. Swearer

10pm Improv Jones

Don't tell me you still watch E.R.? Oh, you poor thing. This is what everyone else will be talking about at work tomorrow. \$3

18 Friday

9pm The Smoking Jackets w/ Tammy Twotone & mentalist Rory Raven



This is going to be some kind of evening. We've got it all tonight.

Tammy Twotone's a transgender ex-marine comedienne. **Rory Raven** is a mentalist that does "sleight of mind", and the evening comes to a close with the hopped-up barrelhouse blues of the **Smoking Jackets!** \$6

19 Saturday

9pm Michael Nicolela

Guitar virtuoso returns to the AS220 stage. \$8

events

FEBRUARY 20 – 26

20 Sunday

8pm The Pork Chop Lounge presents The Variety Show

This show is a great first date because you will always look good. If you want to perform in front of your date contact: The Act Line 431-2247. \$3

21 Monday

7pm Figure Drawing

When it gets this deep into winter Neal lets the model wear a hat and gloves. It keeps the Union reps happy and there's still plenty of human form to sketch. \$5

10³⁰pm TV220

Peek into the world of Rhode Island's independent video underground with TV220 on Cox Interconnect A.

22 Tuesday

9pm Jazz with The Hal Crook Group

The one thing every brain and every heart can agree on: the soul adventures of Crook and Company. \$5

23 Wednesday

7pm The New England Old Time Slow Jam

Bring an instrument and learn some great old American tunes. Free

All shows
all ages

24 Thursday

6pm Performance Showcase

An open stage session for teens involved with one of three chapters of the Muse Union. Free

7pm The Turtles Writers Circle

Join this growing group of writers as they discuss their works-in-progress. Free

10pm Improv Jones

More fun than a barrel of fish. \$3

25 Friday

9pm The Frequency Lounge

Tim O'Keefe presents a special edition of the Lounge. There'll be video sampling and unreal beats from **Beyond the QE2: DJ Duo, DJ Teep, Benny Blanco, VJ Curious Spy** and **VJ Robotkid**. \$5

26 Saturday

noon It's Fools Ball time again

If you wanted to get involved last year or you were involved and loved it, come on to the cafe and get back in the swing! Be here and be a part of the creative committee for the Marching Mob. Just when you thought you'd recovered from last year, we decide to do it again! Free

7pm Our Brave New World

Watch as **Kareem** and **Travis** throw down the wisdom. Don't be scared, they want you to join them – get on the mike and express yourself. \$2

10pm The Last Saturday of the Month

Come down and dance, dance, dance with **The Neo-90's Dance Band** and **The Buck Dewey Big Band**. \$5

events

FEB 27 – MAR 4

27 Sunday

8pm The Pork Chop Lounge presents The Variety Show

You never know what will happen at this show: nudity, profanity or irreverence. One thing's for sure you'll have a great time! To add your 2 cents contact: The Act Line 431-2247. \$3

28 Monday

7pm Figure Drawing

Draw to your heart's content. \$5

10³⁰pm TV220

Tune into Cox Interconnect Channel A for selected short subjects from the student and independent filmmakers of Providence.

29 Tuesday

9pm Jazz with The Hal Crook Group

The leap year has given you an extra day. Why not spend a few of the bonus hours blowing your mind at AS220's Tuesday jazz spectacular? \$5

Coming in March

1 Wednesday

9pm Rock The Blockade



Indie rock meets Cuban salsa in a benefit to send a delegation of musicians from Rhode Island to the March Music Festival in Havana. Join **Havanarama** and some very special guests for a good cause and a great party. \$7.

2 Thursday

10pm Am-be-thang

Brain and booty meet in a sound and light spectacular. \$5

4 Friday

9pm Acoustica

An evening of unplugged performance. \$5

When AS220 renovated 115 Empire Street, we made room for two other young nonprofits: **Perishable Theatre** and **Groundwerx Dance Theatre**. Over the past five years, Perishable and Groundwerx (now **Groundwerx Movement Center**) have grown with AS220 in a wonderful symbiotic relationship. Here's a look at some of what's happening at these two organizations in January and February:

at Perishable Theater 401-331-2695

January 6 – 16

Judy, or What Is It Like To Be A Puppet?
A solo performance by Tom Sgouros. \$6-10

January 20 – 30

...and then you go on
An anthology of the works of Samuel Beckett, adapted and performed by Bob Jaffe. \$6-10

February 20 at 7pm

Textplosion
New work from an emerging local author. Free

January 21 at 10pm

Blood From A Turnip
Rhode Island's only late night puppet salon. \$5

at Groundwerx Movement Center 401-454-4564

January 5th & February 2nd

The Drum and Dance Rent Party
Bring a drum, a melodic instrument, your body, props, whatever. \$3

February 12th at 8pm

Celebrating Eros
Music, wine, aphrodisiacs and all out revelry.
\$10 (RSVP by January 28th)

February 19th at 7pm

Choreographers Showing
Works-in-progress from choreographers and dancers. Interested in performing?
Call 454-4564 by January 28th. Free

The recipe of the month is **Gingered Cabbage and Sweet Potato Soup!**

Yum yum. This will be good for those of you with a stuffy head.

You will need:

- 2 chopped onions
- 1 hunk of ginger the size of a toddler's fist, chopped
- 1/2 head of chopped cabbage
- 2 sweet potatoes
- 2 cubed Idaho potatoes
- 1 leek rinsed and chopped
- 4 thinly sliced red peppers
- soy sauce, cayenne, coriander and salt
- vegetable broth

- : Sautee onions, leeks and ginger for a few minutes. Add the cabbage, potatoes and salt, and cook for a couple more minutes. Add a dash of cayenne, a tablespoon of coriander and about three or four quarts of vegetable broth. Simmer until the potatoes are soft. Add the red peppers and let them cook for a little bit. Add a half cup or more of soy sauce.
- : Stir it up and eat!

Sandwiches

- #1 roast beef, gruyere, tomato, onion, sprouts, horseradish, mayo or mustard \$4.75
- #2 tuna, melted swiss, lettuce tomato, onion \$4.00
- #3 hummus, tabouleh, carrots, red pepper, gruyere \$4
- #4 turkey, brie, lettuce, tomato, cranberry sauce \$4.75
- #5 blackforest ham, pepperoni, provolone, tomato, onion, hot peppers, oil and vinegar \$4.50
- #6 choice of 2 cheeses, carrots, avocado, sprouts, green peppers, hot peppers, lettuce, tomato, hummus \$4.50
- #7 melted swiss, tomato, onion, sprouts, mustard, horseradish \$2.75
- #8 peanut butter, and jelly or nutella \$2.50 with banana \$3.00
- #9 roast beef, boursin, carrots, lettuce, tomato \$4.75 no meat \$2.75
- #10 turkey, green apples, brie, mustard \$4.75 no meat \$2.75
- #11 turkey, roast beef, gruyere, green peppers, carrots, mustard and mayo \$5.00
- #12 blackforest ham, turkey, cheddar, lettuce, tomato, mustard \$4.50

Build Your Own

- white, wheat, syrian, lettuce, tomato, onion, hot peppers, mayo, mustard, horseradish, oil and vinegar \$2.00
- + maple glazed turkey, black forest ham, cajun roast beef, tuna \$4.00
 - + hummus, tabouleh, avocado 75¢ ea.
 - + cheddar, swiss, boursin, smoked gruyere, brie, feta 50¢ ea.
 - + cranberry sauce, green peppers, red peppers, carrots, sprouts, apples, peanut butter 25¢ ea.

Other Stuff

- homemade soup
small \$2.50, large \$3.95
vegetarian chili \$3.50
nachos with cheese, sour cream, and salsa \$3.50 with chili \$4.50
hummus and chips \$2.75
homemade daily specials for under \$5

Salads

- house salad** romaine, tomato, green and red peppers, chick peas, sprouts and carrots
small \$3.00, large \$4.50
- santa claus salad**
spinach, romaine, black beans, avocado, feta, tomato, red onion, sprouts \$4.95
- chef's salad** romaine, tomato, red onions, hot peppers, ham, turkey, swiss \$5.95
- soup with salad
or half sandwich \$4.75
- fruit salad \$3.00
with granola and yogurt \$3.50
- ask about our salad dressings

Drinks

coffee or decaf, refills,
bring your own mug, hot chocolate with steamed milk,
hot cider in the winter, fresh lemonade in the summer

We also have...

- fresh samantha orange juice, grapefruit juice, and 16 ounce juice shakes
- assorted bottled drinks
- beer, wine, and liquor
- yummy baked goods

**Call 861-9190 to
place your order.**

We cater too!

complexnews

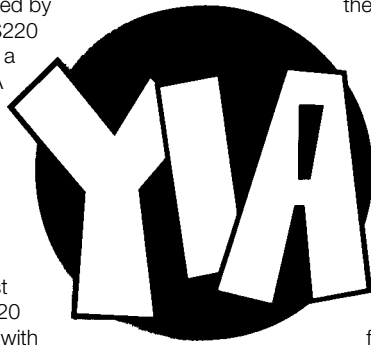
Youth In Action

Moving On Up To The West Side, by Marisol Garcia, age 17, Youth In Action Board Member

Two years ago, AS220 started a relationship with four youths and one adult, a group that came to be known as Youth In Action. YIA is a non-profit organization run and controlled by community youth, with all programs run and created by the youth. AS220 has been like a parent for YIA in more ways than one. AS220 acted as YIA's fiscal agent which helped YIA receive its first funding. AS220 provided YIA with an office in the AS220 building. AS220 nourished and supported YIA in all of their decisions and events.

Initially, AS220 assisted YIA by letting YIA obtain the use of the art gallery for its monthly board meeting, by letting YIA get

temporary use of the Cafe, and by providing a healthy and positive environment for all of YIA's members. Besides AS220 (the organization) advocating for YIA, there are many individuals helping YIA. One of them is **Umberto**



them is **Umberto Crenca**, the Artistic Director of AS220. Since the conception of YIA, Bert has been a crucial element in helping YIA flourish. He was there when

YIA needed its 501(c)(3) and when we built our Board of Directors. He has also been there guiding and mentoring **Karen Feldman** (Executive Director and Co-Founder of YIA) and all of YIA's

members. Other members of AS220's staff who have also helped YIA reach its goals are **Geoff Griffin**, **Shawn Wallace**, **Sheri Van Antwerp Griffin** and **Lizzie Araujo**. Thanks to these guys and many more, YIA has prospered.

Today YIA's membership has exceeded over 60 multicultural young adults including 24 youth who serve on YIA's Board of Directors. YIA has exceeded its boundaries, and is compelled to look for a larger space to run its programs. Starting in January 2000, YIA will now be located at the Trinity Church on Broad Street. In the future, the members of YIA hope to keep our ties with AS220 strong and active, especially with the Muse Union. AS220 was the first place we planted our roots, and we say goodbye with sadness, but also excitement about the future. Thanks so much for making us feel at home and for all your support!

third floor news

In early January, installation artist **Lynne Yamamoto** will begin a two month stay at AS220. ArtContext, the collaboration between the RISD Museum and the Providence Public Libraries, will be bringing her to Providence to execute *This, and my heart*, a new installation.

She will be working with students from RISD and Mount Pleasant High School during RISD's Winter Session. The Mount Pleasant students will provide much of the raw material for her work, which will be created at the Wanskuck branch of the Providence Public Library.

After a lecture by Yamamoto, to be held at the RISD Auditorium March 9th at 6:30 pm, the installation will be available for viewing at the RISD Museum.

In January, we bid farewell to third floor resident **Tim Barsky**. A street performer by trade and a veteran of Brown University, Tim has been an inspiration to his housemates for the past eleven months. He's heading westward to delight and alarm pedestrians up and down the Pacific Coast.

24 hours before our deadline, we were hit with another juicy piece of news: **Mary Geisser** is moving out. With four years of AS220 residence under her belt, Mary's been living here longer than any of her hallmates. The lure of higher education has gotten the best of Mary, but her Fat Cat Productions will continue to bring new rock and roll to the AS220 stage.

AS220

115 Empire Street
Providence, RI 02903

RETURN SERVICE REQUESTED

Non-profit Org
U.S. Postage
P A I D
Providence, RI
Permit No. 1764

